

POLY SUMP & SEWAGE BASINS

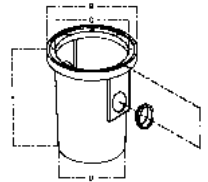
Roll Top Poly Basin



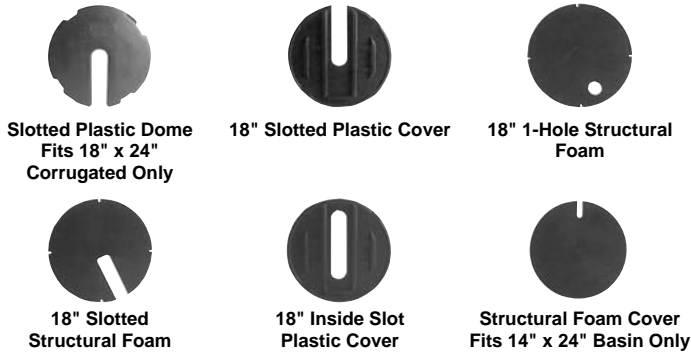
AK's unique molded insert design allows for tight cover fits while also protecting screws from concrete and corrosion!

- Non-Corrosive Polyethylene Construction
- 8 - 1/4" -20 Encapsulated Inserts
- Accepts Solid or Split Covers
- Allows for Maximum Cover Rotation
- Accepts – 4" Adaptaflex Fittings
 - 4" Cast Iron Hubs or
 - Inside Hub Inlet Fittings
- For Use in Sump or Sewage Applications
- Includes Molded Cups for Pump Feet to Minimize Torquing (18 x 30 only)
- Full One Year Warranty

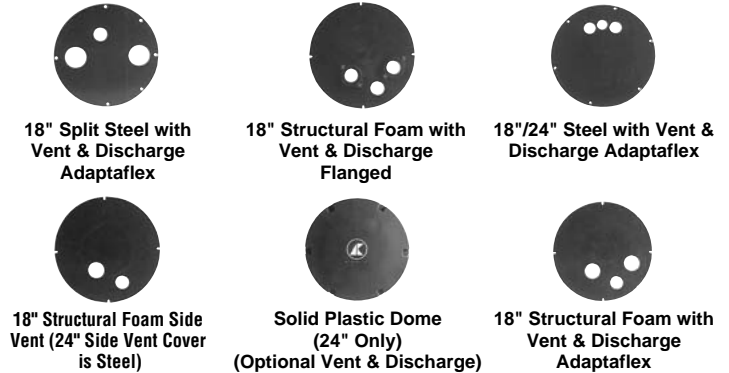
Sizes Available	Capacity	Weight	Wall Thickness	Dimensions				
				A	B	C	D	E
18" x 22"	22 Gal	10 lbs.	0.125"	24.5"	22.5"	17"	14.5"	11.0"
18" x 30"	30 Gal	17 lbs.	0.250"	32.8"	22.5"	18.3"	17"	13.5"
24" x 24"	48 Gal	22 lbs.	0.250"	25.5"	30.5"	24"	22.5"	13.5"
24" x 30"	59 Gal	24 lbs.	0.250"	33"	30.5"	24"	22"	13.5"
24" x 36"	71 Gal	26 lbs.	0.250"	39"	30.6"	24"	23"	13.5"
30" x 36"	110 Gal	35 lbs.	0.3125"	38.5"	36.5"	29"	28"	13.5"
36" x 36"	159 Gal	45 lbs.	0.3125"	38.5"	42.8"	36"	34"	13.5"



Sump Basin Covers



Sewage Basin Covers



Hubs



Discharge Flanges



Gasket Packs



AK offers an extensive line of basin covers and accessories just right for your particular installation. Covers are available in Painted Steel, Structural Foam and Plastic Domes for simplex applications. In response to the demand for radon sealed systems, there are several covers especially designed for radon applications that come complete with seal gaskets and bolts.

POLY SUMP & SEWAGE BASINS

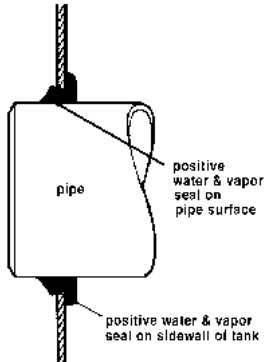
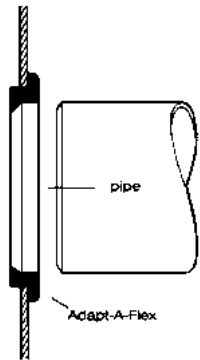
Adaptaflex Fittings



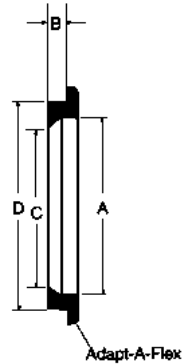
Instantly provides a water and vapor seal on either curved or flat surfaces!

- Ease of Installation—No Tools Required
- Weather and Corrosion Resistant
- No Bolts or Gaskets Required

- Requires No Sealants
- Durable PVC Composition
- Available in 3/8" through 6" sizes
- Works with Steel Pipe, Schedule 35 and 40 Plastic Pipe



Part No.		A	B	C	Hole D	Saw Size
AKP10000	3/8"	.068	.200	.045	1.050	1"
AKP10010	1/2"	.086	.240	.630	1.310	1-1/4"
AKP10020	3/4"	1.040	.240	.820	1.310	1-1/4"
AKP10030	1"	1.300	.220	1.050	1.780	1-3/4"
AKP10035	1-1/4"	1.630	.230	1.350	2.070	2"
AKP10050	1-1/2"	1.870	.230	1.560	2.540	2-1/2"
AKP10040	1-1/4"0	1.630	.230	1.350	3.050	3"
AKP10060	1-1/2"0	1.870	.230	1.560	3.050	3"
AKP10070	2"	2.300	.250	2.000	3.050	3"
AKP10080	3"	3.450	.250	3.100	4.010	4"
AKP10100	4" SDR 35	4.270	.250	3.800	5.025	5"
AKP10110	4"	4.450	.250	4.120	5.060	5"
AKP10120	6" SDR 35	6.200	.250	5.850	7.205	7"
AKP10130	6"	6.450	.250	6.125	7.060	7"



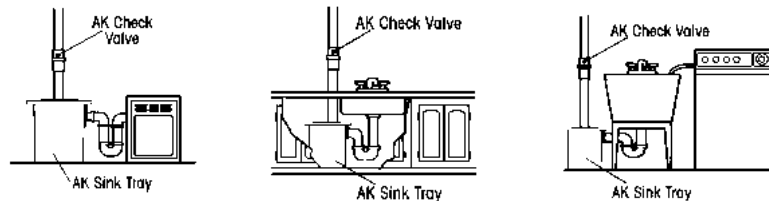
The Sink Tray



As Convenient as the Water Box, the Sink Tray Instantly and Economically Solves Water Handling for Laundry Tubs, Washing Machines, Wet Bars, Dehumidifiers and Other Waste Storage and Pumping Applications.

- Rotationally Molded with No Seams
- Corrosion Resistant Polyethylene
- Includes Bolt Down Cover and 1-1/2" Inlet
- Accepts most 1-1/4" and 1-1/2" Sump Pumps
- Installs in Minutes

Typical Installations



Part No.	Sizes Available	Capacity	Weight	Wall Thickness	Dimensions				
					A	B	C	D	E
AKP50630	13" x 16"	4 Gal	8 lbs.	.188"	15.5"	16.4"	12.8"	12.5"	11.8"

