

Burnham® BOILERS, WATER HEATERS

Spacemaster Gas Boiler

- Direct Vent
- Wall-mounted Boiler
- Cast Iron, Packaged
- Hot Water
- DOE Capacities 58 & 85 MBH



The wall-mounted Spacemaster is designed to vent through any exterior wall. It can be installed directly in the living area because it features sealed combustion.

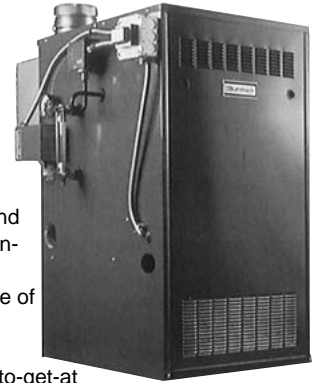
The Spacemaster is ideal for replacement jobs, individual metering in apartments and condominiums, new construction, even for conversion from electric heat.

Standard Equipment: deluxe insulated jacket, safety relief valve, circulator, pressure-temperature gauge, boiler drain valve, 100% shut-off redundant combination gas valve, high limit, stainless steel burners, junction box and transformer with internal wiring, electronic ignition, induced draft fan, flame roll-out switch, suction pressure switch, venting package 5" to 9" thick walls.

Optional Equipment: venting package for 9" to 15" thick walls, probe type low water cut-off, side outlet venting package.

Independence® Gas Boiler

- Cast Iron, Packaged, Semi-Pack or Knockdown
- Steam or Hot Water
- DOE Heating Capacities 51 to 317 MPH



The Independence® gas-fired steam or hot water boiler offers several benefits including safety, comfort, dependability and quality cast iron construction. The Independence is available completely packaged, assembled in a Semi-Pak with your choice of steam or water trim and controls, or as a knockdown version which comes partially assembled for installations in those hard-to-get-at basements or tight locations. Built-in gas safety systems provide homeowners with security and confidence.

Standard Equipment: deluxe insulated jacket, cast iron section assembly, base-burner manifold assembly, Honeywell SmartValve™ electronic ignition or 24-volt standing pilot, 100% shut-off redundant combination gas valve, rear draft hood, vent damper, stainless steel burners, pilot assembly, canopy, blocked vent switch and flame roll out switch.

Certified for installation on combustible flooring. Do not install on carpeting.

Alliance Indirect-Fired Water Heater

- 5 Sizes: 26, 40, 53, 79, and 119 Gallon
- Stainless Steel Construction
- Minimal Standby Losses
- Rapid Recovery
- Commercial Capabilities



The Burnham® Alliance indirect-fired water heater provides more hot water than tankless coils and low BTU capacity direct-fired water heaters can supply. The Alliance utilizes the added capacity of water and steam boilers to heat domestic water for year-round abundant water at the lowest overall operating cost. The Alliance is available in 5 sizes to provide abundant hot water at minimal cost. To accommodate larger hot water loads such as the case in restaurants, laundries, and apartment buildings, all Alliance tanks can be installed in a modular or tandem arrangement without resorting to excessive storage capacities. No additional venting is required as with free-standing gas hot water heaters. Because of its flexible modular design, the Alliance water heater can be easily matched with multiple compact boilers with staged firing controls so fuel use is proportional to hot water demand. This results in increased operating efficiencies and reduced costs for both space heating and domestic hot water service.

Standard Equipment: Stainless steel tank, stainless steel smooth surface coil, expanded polystyrene tank insulation, polypropylene outer jacket, inspection/clean out opening, Honeywell L4006A operating control (5°F diff.)

Series 2 Gas Boiler

- Cast Iron, Packaged
- Hot Water
- DOE Capacities 31 to 244 MBH



The Series 2 hot water boiler combines the dependability of a proven atmospheric draft design with the economy of gas heat. It is completely factory assembled and fire tested and requires only minimal hookup to put into operation. At the heart of every Series 2 is a durable cast iron heat exchanger that enhances energy efficiency and improves boiler performance and has an added bonus in the Lifetime Tru-Blue Limited Warranty. The heat exchanger is sealed by push nipples that expand and contract at the same rate with the sections they join. The Series 2 is equipped with a fuel saving vent damper and achieves annual efficiencies up to 83%. The Series 2 is your long term investment in quality, dependable home heating.

Standard Equipment: Honeywell SmartValve™ electronic ignition or 24 volt standing pilot, deluxe insulated jacket, safety relief valve, 1-1/4" circulator, pressure-temperature gauge, boiler drain valve, 100% shut-off redundant combination gas valve, high limit, blocked vent switch, flame roll-out switch, stainless steel burners, transformer/relay and junction box, draft hood, vent damper.

Optional Equipment: For optional controls and equipment refer to the price sheet.

Certified for installation on combustible flooring. Do not install on carpeting.

Burnham® BOILERS, WATER HEATERS

Classic Radiator

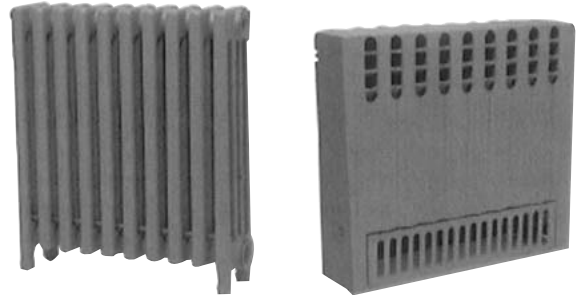
- 3/4" or 1" NPT connection
- Threaded coupling and seal assembly
- Finish coated ready for your choice of colors, or use as they are.
- Brass valves complement the style



Perfect for hot water or steam applications, new construction or remodeling, the Burnham® Classic Radiator provides modern heating performance in a column-style radiator, authentically styled with ornate detail. Decorative brass valves are available for hot water installations to complete the timeless appearance.

Radiators

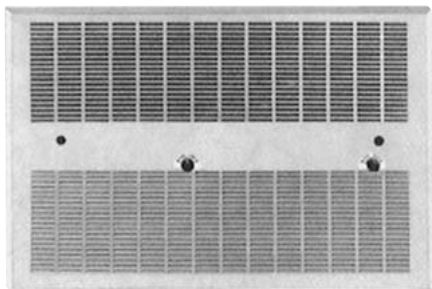
- Cast Iron
- Slenderized in 4 thru 48 sections
- Radiant in 4 thru 44 sections



The Burnham line of cast iron radiators is suitable for both residential and commercial applications. Both the slenderized and the radiant models supply a continuous flow of radiant heat combined with convection heat. The slenderized is available in 4 tube, 19" or 25" high and 6 tube 25" high.

Duo-Rad®

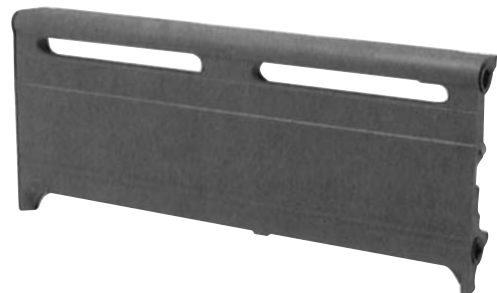
- Fan Coil Units
- Heating 10,000 to 22,000 BTU/HR
- Cooling 5,000 to 10,000 BTU/HR



The Duo-Rad® fan coil unit combines luxurious hydronic heating with cooling in one smartly styled heat distributor. Duo-Rads are ideal for both residential and commercial applications. They are constructed of rigid welded steel, Duo-Rads are available as heating-only units or for combination heating and cooling.

Baseray®

- Cast Iron Construction
- Quiet Operation
- Residential or Commercial Applications



Baseray® is the original cast iron radiant baseboard. It is designed to be inconspicuous but effective. Cast iron construction provides radiant heat, lifetime durability, and dependability. Baseray assemblies up to and including 6 lineal feet are shipped in one piece. Longer assemblies are shipped as sub-assemblies, of 6 lineal feet or less to be joined in the field with a simple pullup tool.