



PLUGS

TEST-BALL® PLUGS

The **most popular** pneumatic plug ever made. The Test-Ball can be used in testing or general plugging applications and in any type of pipe. It easily fits through test tees, sanitary tees, floor drains, and in numerous other “tight” situations.

“AVAILABLE FOR 3/4”–12” PIPE SIZES”



MULTI-SIZE TEST-BALL® PLUGS

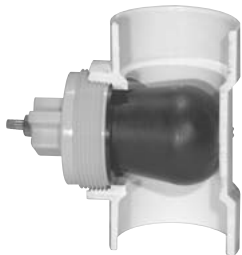
Multi-Size Test-Ball plugs allow one size to fit multiple pipe diameters—this allows one Test-Ball to do the job of two. Multi-Size plugs have the same patented rib design of the original Test-Ball, with an added capability of sealing different diameters of pipe. From an economic perspective, these are some of Cherne’s most cost-effective plugs. Made of natural rubber, Multi-Size Test-Balls will seal both round and out-of-round pipe, and can be used to block flow (air/water DWV test) or as a back plug for sewer air testing. Like all pneumatic plugs, Multi-Size Test-Balls are meant for use in temporary pipe-plugging applications.

Part No.	Nominal Size
275 038	3.0–4.00” (75–100mm)
275 048	4.0–6.0” (100–150mm)
275 069	6.0–8.0” (150–200mm)
275 085	8.0–12.0” (200–300mm)



CLEAN-SEAL® PLUGS

Clean-Seal® Plugs thread into a test tee, **eliminating test water backslash**. This results in a cleaner and more importantly, a safer jobsite. Since the Clean-Seal threads into a tee, the problem of plug movement is eliminated. The plumber no longer needs to struggle after test release—the Clean-Seal stays in place! The Clean-Seal also cuts down on plug body wear and tear from normal use.



LONG TEST-BALL® PLUGS

The Long Test-Ball® is designed for waste stack testing from the floor drain to the sewer pipe, sealing off both the waste stack and downstream sewer pipe. Commonly inserted into sewer wyes, this plug is **long enough to seal both the wye’s vertical riser and the sewer run**.

“AVAILABLE FOR 2”–6” PIPE SIZES”



GRIPPER® PLUGS

The Gripper® is Cherne’s most popular mechanical plug due to an extra-large wing nut combined with a natural rubber “O” ring.

Four styles of Grippers are offered:

- End of pipe—seals only at the end of a pipe.
- Inside of pipe—seals as far into the pipe as needed.
- Cleanout—seals 3” and 4” NPT.
- Hub fit—seals the end of a fitting or hubbed pipe.

“AVAILABLE FOR 1-1/2”–8” PIPE SIZES”





PLASTIC TEST CAPS



Knock-Out™ Inset Test Cap

Part No.	Nominal Size
238 701	1.5" (38.1mm)
238 702	2" (50.8mm)
238 703	3" (76.5mm)
238 704	4" (101.6mm)



Push-Cap™ Test Cap

Part No.	Nominal Size
228 108	1.5" (38.1mm)
228 208	2" (50.8mm)
228 308	3" (76.5mm)
228 408	4" (101.6mm)



End-Cap™ Test Cap

Part No.	Nominal Size
238 108	1.5" (38.1mm)
238 208	2" (50.8mm)
238 308	3" (76.5mm)
238 408	4" (101.6mm)



MS End-Cap™ Test Cap

Part No.	Nominal Size
238 128	1.5"-2" (38.1-50.8mm)
238 348	3"-4" (76.5-101.6mm)



TEST-KAPS®

Test-Kaps have a reinforced cross molded into the top, increasing the strength of this mechanical plug. It can be used on plastic, steel, copper, and cast iron pipe. **The Test-Kap can be tapped and a boiler drain port attached for easy water/air fill and drain for pressure testing.**

"AVAILABLE FOR 1-1/2"-6" PIPE SIZES"



MONITOR WELL® PLUGS

Monitor Well® plugs are designed to **seal ground water monitor wells** placed around underground storage tanks, as well as around above ground tanks, landfills, or treatment plants. **Meets all EPA requirements.**

"AVAILABLE FOR 1-1/2"-8" PIPE SIZES"



CLOG BUSTER® DRAIN FLUSHERS

Unclog drainpipes fast with Cherne's Clog Buster® drain flusher. The slotted open end of the Clog Buster enables water pressure to be exerted on the clog. The filling mechanism is a standard 3/4" female garden hose connection. **The Clog Buster is safer and more cost effective than using chemicals.**

"AVAILABLE TO FIT 1"-6" DRAINS"



TEST PUMPS

The best test pump on the market- period. The Air-Max has a durable aluminum barrel and a textured aluminum base. Gauge is raised from the barrel, protecting it from damage. New thumb lock feature—horizontal to unlock, vertical to lock. Includes a long durable no-kink hose. * Always use an extension hose when inflating a pneumatic plug.

Accessories for Pump

- Gauge for Hand Pump
- Pump Leather (Post 10/90 Pumps)
- Hose Assembly w/Thumb Lock
- Thumb Lock w/Clamp
- Check Valve
- 2 Foot Extension Hose
- 3 Foot Extension Hose
- 5 Foot Extension Hose
- 10 Foot Extension Hose
- 20 Foot Extension Hose
- Deflator with Clamp (Female Replacement End)
- Inflator with Clamp (Male Replacement End)
- 5 Foot Extension Hose w/ gauge
- 10 Foot Extension Hose w/ gauge
- 20 Foot Extension Hose w/ gauge