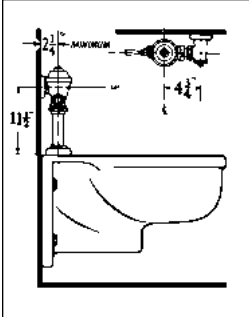


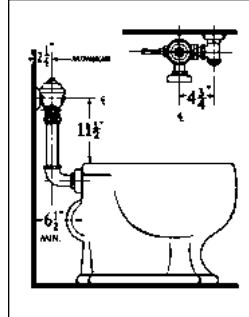


FLUSH VALVES



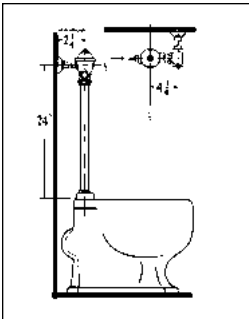
402

Polished chrome flush valve, externally adjustable, diaphragm type, with 1" screwdriver angle stop, metal "Rubberflex" oscillating handle, flush connection and coupling for 1-1/2" top spud, wall and spud flanges.



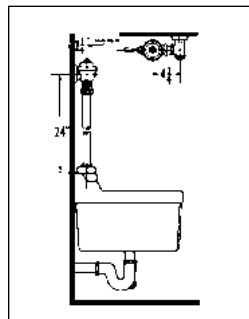
404

Polished chrome flush valve, externally adjustable, diaphragm type, with 1" screwdriver angle stop, metal "Rubberflex" oscillating handle, elbow flush connection and coupling for 1-1/2" back spud, wall and spud flanges.



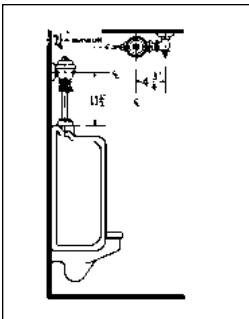
414

Polished chrome flush valve, externally adjustable, diaphragm type with 1" screwdriver angle stop, metal "Rubberflex" oscillating handle, flush connection and coupling for 1-1/2" top spud, wall and spud flanges.



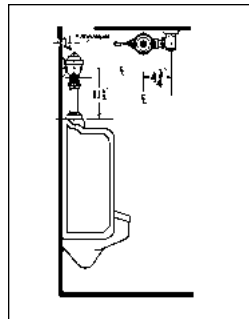
418

Polished chrome flush valve, externally adjustable, diaphragm type with 1" screwdriver angle stop, metal "Rubberflex" oscillating handle, flush connection and coupling for 1-1/2" top spud, wall and spud flanges.



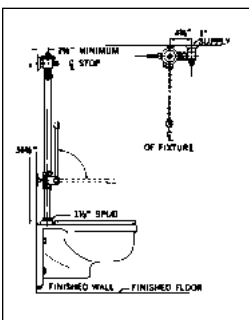
451

Polished chrome flush valve, externally adjustable, diaphragm type with 3/4" screwdriver angle stop, metal "Rubberflex" oscillating handle, flush connection and coupling for 3/4" top spud, wall and spud flanges.



452

Polished chrome flush valve, externally adjustable, diaphragm type with 1" screwdriver angle stop, metal "Rubberflex" oscillating handle, flush connection and coupling for 1-1/4" top spud, wall and spud flanges.



455

Delany 455 polished chrome flush valve complete with Delany 977 diverter valve for bed pan washing. Flush valve is diaphragm type, externally adjustable for water conservation, with 1" capped screwdriver angle stop with back check, wall flange, metal Rubberflex oscillating handle, Turn-to-Silence equipment, No. 50 vacuum breaker, flush connection, spud nut, and spud flange for 1 1/2" top spud. Diverter valve is in-line rough and includes wall brace.

456

Same as 455 except it includes Delany 977-1 diverter valve with deoseptic injector and adjustment for volume of deoseptic fluid.



455

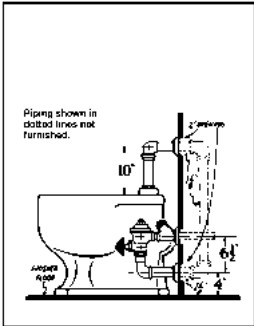


456

We carry a complete line of Coyne & Delany renewal parts.

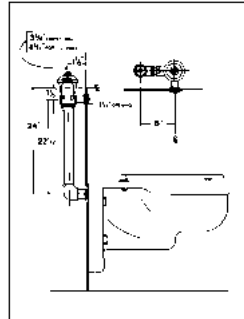


FLUSH VALVES (CONTINUED)



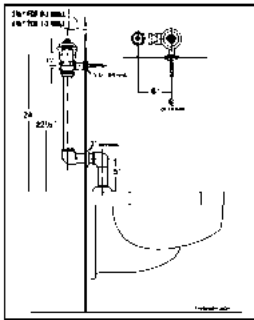
488

Polished chrome flush valve, externally adjustable, diaphragm type, with 1" screwdriver Straight stop, metal "Rubberflex" oscillating foot pedal, 1-1/4" female I.P. union outlet, 1-1/4" street ell, casing to cover 1-1/4" cast elbow, flush connection and coupling nut for 1-1/2" top spud, wall flanges and spud flange.



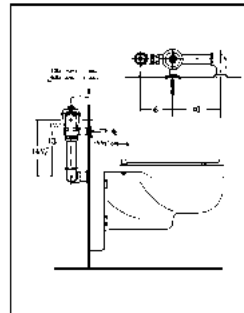
534W

Concealed rough brass flush valve, externally adjustable diaphragm type with 1" wheel handle angle stop, metal "Rubberflex" push button through wall, wall flange, elbow flush connection and coupling for 1-1/2" concealed back spud. All exposed parts polished chrome.



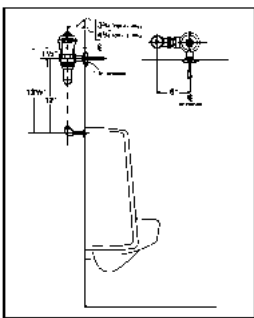
536W

Concealed rough brass flush valve, externally adjustable diaphragm type with 1" wheel handle angle stop, metal "Rubberflex" oscillating handle through wall, wall flange, double elbow flush connection and coupling for 1-1/2" exposed top spud, wall and spud flanges. All exposed parts polished chrome.



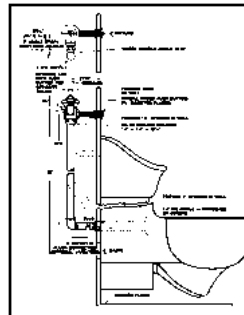
543W

Concealed rough brass flush valve, externally adjustable diaphragm type with 1" wheel handle angle stop, metal "Rubberflex" oscillating handle through wall, wall flange, double elbow flush connection and coupling for 1-1/2" concealed back spud. Exposed parts polished chrome.



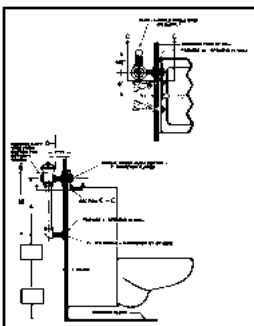
571S

Concealed rough brass flush valve, externally adjustable diaphragm type with 3/4" wheel handle angle stop, metal "Rubberflex" oscillating handle through wall, wall flange, elbow flush connection and coupling for 3/4" concealed back spud. All exposed parts polished chrome.



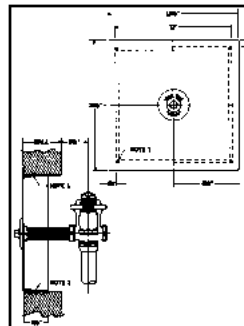
568W

Concealed rough brass, diaphragm type, with renewable main seat and external adjustment for length of flush, complete with stop and flush connection to fixture, all exposed parts polished chrome.



623

Concealed rough brass, diaphragm type, with renewable main seat and external adjustment for length of flush, with all exposed parts polished chrome.



988

Delany Kwik-Entry access panel and frame assembly provides ready accessibility to concealed flush valves for maintenance purposes. Access panel is heavy gauge stainless steel with brushed finish and vandal proof screws. Frame assembly slips into 12" x 12" cavity in wall and allows ample room to swing wrenches to dismantle flush valve. Wall flange surrounding push button is removed by spanner wrench prior to removing access panel. Ideal for locations where pipe chases of sufficient size cannot be provided. Neat, finished appearance.



We carry a complete line of Coyne & Delany renewal parts.