



**DOUBLE WALL FLUE PIPE & FITTINGS**

**ADAPTABILITY**

Metal-Fab round B-Vent has been evaluated and listed by Underwriters Laboratories, Inc., to mate with other specifically identified and UL listed round gas vent, in 3" through 6" diameters. Metal-Fab's approval covers connections at both the male (outlet) end, and the female (inlet) end to the following B-Vent products:

- General Products Co., Inc. (Airjet)
- American Metal Products Co. (Amerivent)
- Hart & Cooley (Metlvent)
- Household Manufacturing Inc. (Metalbestos & Airmate)
- Mitchell Metal Products Inc. (Mitchvent)
- Selkirk Metalbestos (Metalbestos)
- Simpson Dura-Vent Inc. (Duravent)

**PIPE LENGTHS**  
 3M through 14M



**ADAPTER—M6A**

**90° ADJUSTABLE ELBOW**  
 M90 – 3" through 8"



**45°/60° ADJUSTABLE ELBOW**  
 M45 – 3" through 6"  
**45° ADJUSTABLE ELBOW**  
 M45/60 – 7" through 8"



**SWIVEL WYE—MSY**  
 4" through 6"

**STANDARD TEE—MT**  
 7" through 30"



**SWIVEL TEE—MST**  
 3" through 6"



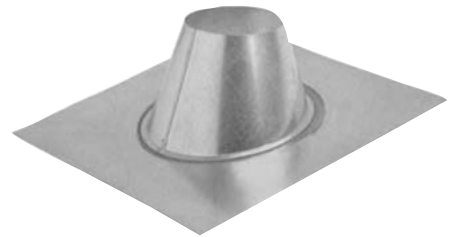
**INCREASERS**



**PARTITION THIMBLE**



**STANDARD FLASHING—MF**



**TALL CONE FLAT FLASHING**



**STORM COLLAR**



"WE ALSO CARRY A FULL LINE OF SINGLE WALL FLUE PIPE AND FITTINGS"