

CCS-ATM

CGS-A Series

High Efficiency Gas-Fired Steam Boiler



New Yorker[®]
RESIDENTIAL HEATING BOILERS

WHY

Why Hydronic Heat by New Yorker?



New Yorker has produced a variety of boilers for a wide range of applications with simple installation and service. As part of the New Yorker family of products, the CGS-A gas-fired cast iron boiler delivers the proven features that have made New Yorker the choice of heating professionals nationwide.



The Right Choice

When the time comes to replace your existing boiler, and you need a reliable and affordable heat source, ask your contractor about the New Yorker CGS-A Series.

Replacing a steam heating system is a big decision and many factors must be evaluated. When you chose the New Yorker CGS-A, all those decisions can be made easily.

An Economical Choice

The CGS-A cast iron boiler design maximizes heat transfer for the most efficient use of fuel — saving your valuable heating dollars.

A Reliable Choice

The New Yorker CGS-A Series Boiler uses only name brand controls and accessories, giving you years of comfortable, reliable heating.

The CGS-A Series cast iron heat exchanger, with metal section connectors, is immune to petroleum based chemicals — such as those used to clean steam boilers — which can deteriorate rubber seals used by some competitors. This means a longer boiler life and peace of mind for you.

A Wise Choice

- New Yorker stands behind the heat exchanger of the CGS-A Series with a 10-Year Limited Warranty. See your installing contractor for more warranty information.
- The cast iron heat exchanger is designed for easy maintenance during yearly service calls, saving you money.
- The heat exchanger design and construction meet the requirements of the ASME Boiler and Pressure Vessel Code—this ensures quality and safety for you.
- The CGS-A Series is available as a completely packaged boiler which saves time and money when installing.
- An Annual Fuel Utilization Efficiency (AFUE) up to 81.5% makes the CGS-A a solid investment for years to come.

Advantages of the CGS-A

ADVANTAGES

Top Quality Components

are standard, including MM Probetype LWCO, and Honeywell Pressuretrol.

Metal Section Connectors

resist chemicals to increase the life of your boiler.

Cast Iron Heat Exchanger

provides long life and dependability.

Aluminized Burners

for durable and reliable service.

Natural Gas or LP Gas

can be used, allowing you to match your heating needs.

Deluxe Insulated Jacket

increases efficiency by reducing stand-by heat losses.

Available in 6 Sizes,

with heating capacities from 57 to 201 MBH, so your specific household needs can be met.

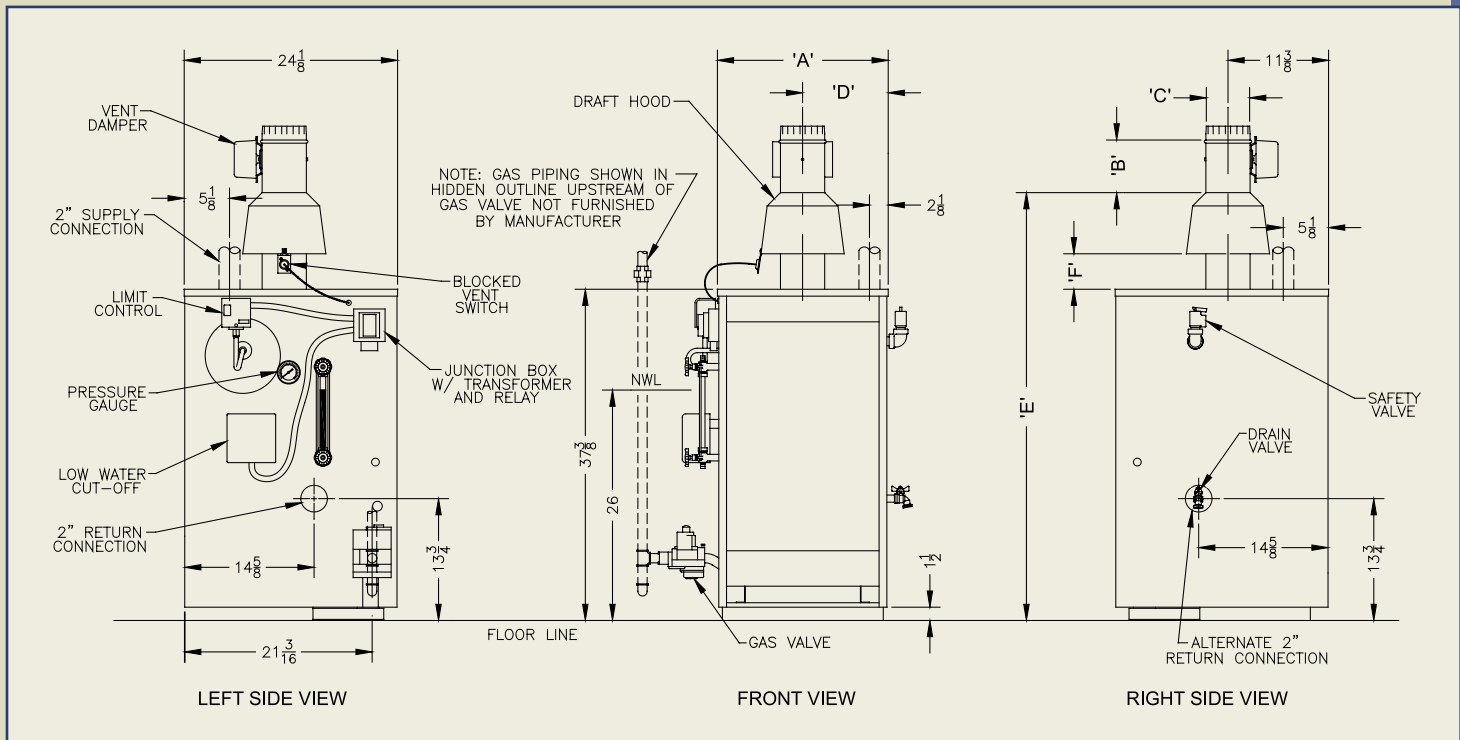
Intermittent Ignition System

available as an option for extra savings.

Ratings & Specifications

Model	CGS-30A	CGS-40A	CGS-50A	CGS-60A	CGS-70A	CGS-80A
DOE Heating Capacity MBH	57	86	115	143	172	201
Net IBR Rating Steam MBH	43	65	86	107	129	151
Net IBR Rating Steam Sq. Ft.	179	271	358	446	538	629
Burner Input	70	105	140	175	210	245
AFUE % - Standing Pilot	79.5	80.0	80.1	80.2	80.3	80.4
AFUE % - Electronic Ignition	81.4	81.4	81.4	81.4	81.5	81.5
Chimney Requirements	8" x 8" 15'	8" x 8" 15'	8" x 8" 15'	8" x 8" 15'	8" x 8" 15'	8" x 8" 15'
Jacket Width - 'A'	12-3/16"	15-3/4"	19-3/8"	22-7/8"	26-1/2"	30"
Vent Damper Height - 'B'	4-1/2"	4-1/2"	4-1/2"	4-1/2"	5-1/4"	5-1/4"
Draft Hood Collar Dia. - 'C'	4"	5"	6"	6"	7"	7"
Jacket Side to Centerline of Draft Hood - 'D'	6-1/8"	7-7/8"	9-3/4"	11-1/2"	13-1/4"	15"
Floor to Top of Draft Hood - 'E'						
Natural Gas	53-1/8"	50-1/4"	52-1/8"	53-3/8"	55-7/8"	57-1/8"
LP Gas	53-1/8"	50-1/4"	55-1/8"	56-3/8"	58-7/8"	60-3/4"
Draft Hood Steam Height - 'F'						
Natural Gas	9-3/4"	6"	7-1/4"	8-1/2"	9-3/4"	11"
LP Gas	9-3/4"	6"	10-1/4"	11-1/2"	12-3/4"	14-1/2"
Approx. Shipping Weight (lbs.)	305	370	440	502	566	650

Design working pressure: 15 PSIG, steam only



© 2005 New Yorker Boiler Company, Inc.
 Hatfield, PA
 (215) 855-8055
 www.newyorkerboiler.com
 PL81420101003-12/05-5Ms

