



APPROVED PRODUCTS FOR FIRE PROTECTION PIPING SYSTEMS

FireLock Rigid Coupling Style 005

Request publication 10.02



Rubber Gasketed
 Pipe Fittings 913H

Request Victaulic
 publication 10.01 for details.

FireLock Fittings 90° Elbow No. 001 45° Elbow No. 003

Request publication 10.03



No. 001



No. 003



Request Victaulic
 publication 10.01 for details.

Tee No. 002 Tee No. 006

Request publication 10.03



No. 002



No. 006

FireLock Flange Adapter

Style 744-175 psi With Vic-Plus Gasket

Request publication 10.04



Rubber Gasketed
 Pipe Fittings 913H

Request Victaulic
 publication 10.01 for details.

End of Run Fittings

Request publication 10.21
 No. 67



Rubber Gasketed
 Pipe Fittings 913H

Request Victaulic
 publication 10.01 for details.

Models V27, V34 and V38 Sprinkler Wrenches

Victaulic provides a variety of wrenches to speed and ease sprinkler installation. Each wrench is designed to fit the particular sprinkler frame style identified. These wrenches should only be used for installation of the designated style sprinkler and no other type wrench should be used or warranty is void. Most Victaulic sprinklers have a unique hex-head design to allow wrench engagement from a greater variety of angles and positions than conventional sprinklers. In addition to standard offset open end wrenches, there is a socket for some areas and open sided specialized wrenches for recessed or concealed installation.



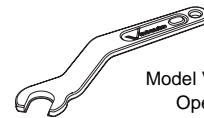
Model V36 Recessed



Model V36 Recessed



Model V27 Socket



Model V27 & V34 Open End

FireLock™ Sprinkler Head Guards



V27 Intermediate Upright Guard



V34 Intermediate Upright Guard



V27 Guard



V34 Guard

Victaulic IPS CARBON STEEL PIPE FIT SYSTEM

FIT® Piping System for Steel Pipe

The FIT (Fast Installation Technique) line of products is designed specifically to join plain end steel pipe without threading or welding (pipe ends must be properly cleaned). The unique locking lug secures pipe to the FIT fittings with just a quarter-turn. Gaskets, located in both ends of the fittings, seal as the pipe is inserted past them and sealing is enhanced by pressure in the line. Silicone gaskets are recommended for fire protection dry systems, all systems operating below 0°F (-18°C). Internal pipe stops provide a uniform takeout dimension. Marking of the pipe indi-

Style 963
 FIT Straight Tee

The Style 963 FIT straight tee provides direct connection of three plain end pipes of the same size. Style 963 is useful for fire protection system connections.



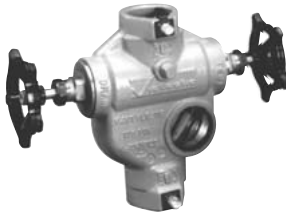
Style 96
 FIT Reducing Tees

The Style 96 FIT reducing tee joins same size pipe while providing a female threaded outlet. It also accommodates drop nipples, branches, sprinkler heads, gauges, and other male threaded connections.



Style 719
 TestMaster™
 Alarm Test Modules

The Victaulic Style 719 TestMaster includes a durable ductile iron body featuring 1-1/4" (42.4 mm) FIT inlet and outlet. The FIT method provides fast and easy installation of TestMaster without threading or welding (pipe must be properly cleaned and prepared). The FIT system's unique locking lugs allow you to install Style 719 with just a quarter turn.



Style 969
 FIT Reducing Run and
 Outlet Tees

Direct connection of differing sizes on the run is possible with the Style 969 FIT reducing run and outlet tee. No special reducing fittings are necessary. Uniform pressure drop is a plus.



cates correct insertion of the pipe to the stop. Visual locking indicator cast into the housing corresponds to lug markings for visual verification of the lug locked position.

FIT products are UL, ULC and FM rated for 175 PSI (1200 kPa) working pressure on Schedule 10/40 steel pipe. They are approved and listed for above ground fire protection systems, automatic sprinkler, open sprinkler and standpipe both wet and dry systems. Electrogalvanized housings are available and recommended for special hazards, exposed locations and corrosive environments.

Style 961
 FIT 90° Elbows

The Style 961 FIT 90° elbow is a full flow elbow for minimum pressure drop. Elbows rotate for alignment before locking. Internal pipe stop provides uniform takeout.



Style 966
 FIT Reducing Elbows

Designed for automatic sprinkler systems, the Style 966 FIT reducing elbow provides a reduced threaded connection for 1/2" or 3/4" sprinkler head or 1" outlets.



Style 960
 FIT Couplings

The Style 960 FIT straight coupling allows direct plain end connections without outlets. This product is ideal for connecting plain end finned tube or equipment in perimeter heating systems or for small grid sprinkler systems.



Style 929
 FIT Outlet/Mechanical-T

The Style 929 FIT outlet/Mechanical-T permits direct connection in the middle of a pipe section. FIT locking lugs permit direct plain end branch connection. The Style 929 is available galvanized. A cross configuration can be achieved using two Style 929 upper housings.



Style 929
 FIT Cross

Reducing or straight cross-type connection or hole cut pipe can be accommodated using the Style 929 FIT cross.





FIRE DEVICES AND VALVES

FIRELOCK ACTUATED VALVES

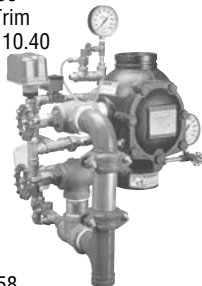
Series 751
Alarm Check
Request 10.30



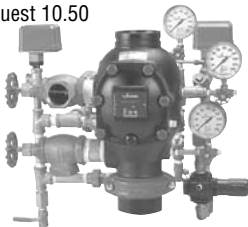
Series 756
Dry Check
Request 10.35



Series 758
Deluge Trim
Request 10.40



Series 758
Preaction Trim
Request 10.50



Series 717R
FireLock™ Riser Valve
Request 10.08



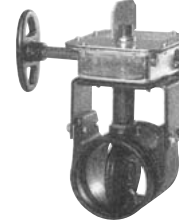
Listing Approved Agency	Pipe Size Range Inches	Rated Work. Press. Pipe Wall psi		Notes
		Std.	Light	
UL, FM, MEA, CSFM	1 1/2-6	300	300	1,5,8,10
UL, FM	8	225	225	1,5,8,10
UL, FM, MEA, CSFM	1 1/2	300	300	2,6
UL, FM, MEA, CSFM	1 1/2-6	300	300	2,7
UL, FM	8	225	225	2,7
UL, FM, MEA, CSFM	1 1/2-6	300	300	2,7
UL, MEA	2-1/2,3,4,5,5-1/2, 6,6-1/2,8,10,12	250	250	12,13,14
FM	4,5,6,8,10,12	250	250	12,13

GROOVED END VALVES

Series 705W
Butterfly Valve
Request 10.18



Series 705W
Butterfly Valve with Tap
Request 10.06



Series 727
FireBall® Valve
Request 10.07



Series 717
FireLock™ Check Valve
Request 10.08



Series 722
Ball Valve (Thd.)
Request 10.11



Listing Approved Agency	Pipe Size Range Inches	Rated Work. Press. Pipe Wall psi		Notes
		Std.	Light	
UL, FM, MEA, CSFM	2 1/2, 3, 4, 5, 6, 8, 10, 12	300	300	3,8,11,15
UL, FM, MEA, CSFM	2 1/2, 3, 4, 5, 6, 8, 10, 12	300	300	3,8,11,15
UL, FM, BSA, CSFM	2, 2 1/2, 3	300	300	4,9
UL, MEA	2 1/2,3,4,5,5 1/2, 6, 6 1/2,8,10,12	250	250	12,13,14
FM	4,5,6,8,10,12	250	250	12,13
UL	1/2-2	175	N/A	-
FM	1/2, 3/4, 1-2	600 500	N/A N/A	- -

VALVES NOTES

- 1-MEA Approved #210-98-E
- 2-MEA Approved #248-98-E
- 3-MEA Approved #276-99-E
- 4-BSA Approved #651-86
- 5-CSFM Listing #7770-0531: 109
- 6-CSFM Listing #7770-0531: 111
- 7-CSFM Listing #7770-0531: 110

- 8-CSFM Listing #7770-0531: 103
- 9-CSFM Listing #7770-0531: 102
- 10-Approved for vertical or horizontal installation.
- 11-Indoor/Outdoor use weatherproof operator.
- 12-Listed/Approved for single check and anti-water hammer service: for horizontal or vertical installation.

- 13-Pressure rating of Series 717R is based on the rating of Riser Check Kit when equipped for this service.
- 14-MEA Approved #154-94-E, Vol. 1 to 200 psi.
- 15-CSFM Listing #7770-0531: 113.



APPROVED PRODUCTS FOR FIRE PROTECTION PIPING SYSTEMS

FireLock™ Check Valves
Series 717 & 717R

Request publication 10.08 for Series 717 and 10.09 for Series 717R.



Request Victaulic publication 10.01 for details.

Style 720 Testmaster II
Alarm Test Module
With Gauge Port Tap

Request publication 10.22



Request Victaulic publication 10.01 for details.

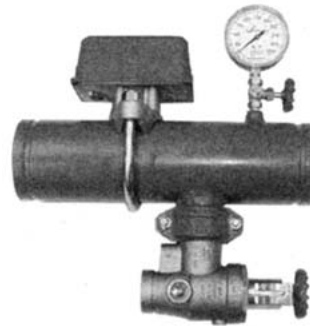
Patent Pending

Style 720T with Threaded Ends

Style 720G with Grooved Ends

Riser Manifold Assembly
Style 747

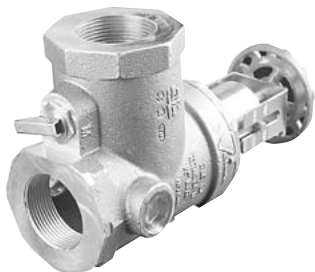
Request publication 10.96



Request Victaulic publication 10.01 for details.

Style 720 Testmaster II
Alarm Test Module
With Gauge Port Tap

Request publication 10.22



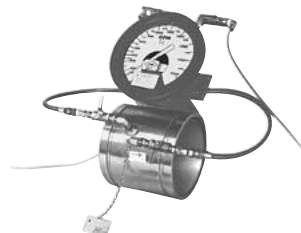
Request Victaulic publication 10.01 for details.

Patent Pending

Style 720 with Gauge Port Tap

Fire Pump Test Meter
Style 735

Request publication 10.11



Approved



FIRELOCK AUTOMATIC SPRINKLERS

Standard Orifice-Light Hazard, Ordinary Hazard



V27 Frame-K5.6
Pendant
Request 40.10

Model No.	Deflector Type	Response Category	Temp. Ratings	Available Finishes	Approvals Listing	Notes
V2703	Upright	Standard	A, C, E, F, J, K, M	1,2,3,4,5,6,7,8	UL, ULC, FM, MEA, CSFM	1, 2, 4
V2707	Pendent	Standard	A, C, E, F, J, K, M	1,2,3,4,5,6,7,8	UL, ULC, FM, MEA, CSFM	1, 2, 4
V2707	Recessed Pendent	Standard	A, C, E, F, J, K, M	1,2,3,4,5,6,7,8	UL, ULC, FM, MEA, CSFM	1, 2, 4
V2704	Upright	Quick	A, C, E, F, J	1,2,3,4,6,8	UL, ULC, FM, MEA, CSFM	1, 2, 4
V2708	Pendent	Quick	A, C, E, F, J	1,2,3,4,6,8	UL, ULC, FM, MEA, CSFM	1, 2, 4
V2708	Recessed Pendent	Quick	A, C, E, F, J	1,2,3,4,6,8	UL, ULC, FM, MEA, CSFM	1, 2, 4

Std. Orifice-Horizontal Sidewall-Light Hazard, Ordinary Hazard



V27 Frame-K5.6
Sidewall
Request 40.11

Model No.	Deflector Type	Response Category	Temp. Ratings	Available Finishes	Approvals Listing	Notes
V2709	Horizontal Sidewall	Standard	A, C, E, F, J, K, M	1,2,3,4,5,6,7,8	UL, ULC, FM, MEA, CSFM	1, 2, 3, 4
V2709	Recessed Hor. Sidewall	Standard	A, C, E, F, J, K, M	1,2,3,4,5,6,7,8	UL, ULC, FM, MEA, CSFM	1, 2, 3, 4
V2710	Horizontal Sidewall	Quick	A, C, E, F, J	1,2,3,4,6,8	UL, ULC, FM, MEA, CSFM	1, 2, 3, 4
V2710	Recessed Hor. Sidewall	Quick	A, C, E, F, J	1,2,3,4,6,8	UL, ULC, FM, MEA, CSFM	1, 2, 3, 4

Std. Orifice-High Press. (250 PSI/1725 kPa)-Light Hazard, Ordinary Hazard



V27 Frame-K5.6
Upright
Request 40.13

Model No.	Deflector Type	Response Category	Temp. Ratings	Available Finishes	Approvals Listing	Notes
V2703	Upright	Standard	A, C, E, F, J, K, M	1,2,3,4,8	UL, ULC	1, 2, 4
V2707	Pendent	Standard	A, C, E, F, J, K, M	1,2,3,4,8	UL, ULC	1, 2, 4
V2707	Recessed Pendent	Standard	A, C, E, F, J, K, M	1,2,3,4,8	UL, ULC	1, 2, 4
V2704	Upright	Quick	A, C, E, F, J	1,2,3,4,8	UL, ULC, MEA, CSFM	1, 2, 4
V2708	Pendent	Quick	A, C, E, F, J	1,2,3,4,8	UL, ULC, MEA, CSFM	1, 2, 4
V2708	Recessed Pendent	Quick	A, C, E, F, J	1,2,3,4,8	UL, ULC, MEA, CSFM	1, 2, 4

Std. Orif.-High Pres. (250 PSI/1725 kPa)-Hor. Side.-Light Hazard, Ordinary Hazard



V27 Frame-K5.6
Sidewall
Request 40.14

Model No.	Deflector Type	Response Category	Temp. Ratings	Available Finishes	Approvals Listing	Notes
V2709	Horizontal Sidewall	Standard	A, C, E, F, J, K, M	1,2,3,4,8	UL, ULC, MEA, CSFM	1, 2, 4
V2709	Recessed Hor. Sidewall	Standard	A, C, E, F, J, K, M	1,2,3,4,8	UL, ULC, MEA, CSFM	1, 2, 4
V2710	Horizontal Sidewall	Quick	A, C, E, F, J	1,2,3,4,8	UL, ULC, MEA, CSFM	1, 2, 4
V2710	Recessed Hor. Sidewall	Quick	A, C, E, F, J	1,2,3,4,8	UL, ULC, MEA, CSFM	1, 2, 4

Large Orifice-Commercial-Light Hazard, Ordinary Hazard, Storage



V34 Frame-K8.0
Pendant
Request 40.15

Model No.	Deflector Type	Response Category	Temp. Ratings	Available Finishes	Approvals Listing	Notes
V3401	Upright	Standard	A, C, E, F, J, K, M	1,2,3,4,5,6,7,8	UL, ULC, FM, MEA, CSFM	1, 2, 4
V3405	Pendent	Standard	A, C, E, F, J, K, M	1,2,3,4,5,6,7,8	UL, ULC, FM, MEA, CSFM	1, 2, 4
V3405	Recessed Pendent	Standard	A, C, E, F, J, K, M	1,2,3,4,5,6,7,8	UL, ULC, FM, MEA, CSFM	1, 2, 4
V3402	Upright	Quick	A, C, E, F, J	1,2,3,4,6,8	UL, ULC, FM, MEA, CSFM	1, 2, 4
V3406	Pendent	Quick	A, C, E, F, J	1,2,3,4,6,8	UL, ULC, FM, MEA, CSFM	1, 2, 4
V3406	Recessed Pendent	Quick	A, C, E, F, J	1,2,3,4,6,8	UL, ULC, FM, MEA, CSFM	1, 2, 4

Large Orifice-Commercial-Hor. Sidewall-Light Hazard, Ordinary Hazard



V34 Frame-K8.0
Sidewall
Request 40.16

Model No.	Deflector Type	Response Category	Temp. Ratings	Available Finishes	Approvals Listing	Notes
V2709	Horizontal Sidewall	Standard	A, C, E, F, J, K, M	1,2,3,4,5,6,7,8	UL, ULC, MEA, CSFM	1, 2, 4
V2709	Recessed Hor. Sidewall	Standard	A, C, E, F, J, K, M	1,2,3,4,5,6,7,8	UL, ULC, MEA, CSFM	1, 2, 4
V2710	Horizontal Sidewall	Quick	A, C, E, F, J	1,2,3,4,6,8	UL, ULC, MEA, CSFM	1, 2, 4
V2710	Recessed Hor. Sidewall	Quick	A, C, E, F, J	1,2,3,4,6,8	UL, ULC, MEA, CSFM	1, 2, 4

TEMPERATURE RATINGS

*Not all temperatures are available with all styles of sprinklers. Consult individual submittal sheets for specific information.

Victaulic Part Identification	Temperature-°F/°C		Glass Bulb Color
	Nominal Temperature Rating	Maximum Ambient Temp. Allowed	
A	135 / 57	100/38	Orange
C	155 / 68	100/38	Red
E	175 / 79	150/65	Yellow
F	200 / 93	150/65	Green
J	286 / 141	225/107	Blue
K	360 / 182	300/149	Mauve
M	Open	-	No Bulb
N	162 / 72	100/38	Fusible Metal

SPRINKLER FINISHES

* Contact Victaulic for wax, lead, and wax-over-lead coatings.

Abbrev.	Victaulic Part Ident.	Finish	Abbrev.	Victaulic Part Ident.	Finish
BR	1	Plain	CSTM	8	Custom Painted
CP	2	Chrome	WX	5	*Wax Coated
BB	3	Bright Brass	LD	6	*Lead Coated
WH	4	White Painted	WL	7	*Wax/Lead Coated

AUTOMATIC SPRINKLER NOTES *Contact Victaulic for wax, lead, and wax-over-lead coatings.

1-MEA Approved for V27 and V34-62-99-E.
2-CSFM Listing for V27 and V34-7690-0531: 112.
3-FM Approved for light hazard only.

4-Not all temperature ratings or finishes are approved or listed. Refer to current product submittals for specific information. V27 and V34 units are MEA (#62-99-E) and CSFM (#7690-0531:112) Listed.



FIRELOCK AUTOMATIC SPRINKLERS

Small Orifice-Light Hazard



V27 Frame-K2.8 Upright
Request 40.40

Model No.	Deflector Type	Response Category	Temp. Ratings	Available Finishes	Approvals Listing	Notes
V2705	Pendent	Standard	A, C, E, F, J, K, M	1,2,3,4,5,6,7,8	UL, ULC	1, 2, 4
V2701	Upright	Standard	A, C, E, F, J, K, M	1,2,3,4,5,6,7,8	UL, ULC, FM	1, 2, 4
V2705	Recessed Pendent	Standard	A, C, E, F, J, K, M	1,2,3,4,5,6,7,8	UL, ULC	1, 2, 4
V2706	Pendent	Quick	A, C, E, F, J	1,2,3,4,6,8	UL, ULC	1, 2, 4
V2702	Upright	Quick	A, C, E, F, J	1,2,3,4,6,8	UL, ULC, FM	1, 2, 4
V2706	Recessed Pendent	Quick	A, C, E, F, J	1,2,3,4,6,8	UL, ULC	1, 2, 4

Residential



V27 Frame-K3.0/K3.5 Pendent
Request 40.45

Model No.	Deflector Type	Response Category	Temp. Ratings	Available Finishes	Approvals Listing	Notes
V2714	Pendent	Quick	C	1,2,3,4,8	UL, ULC	1, 2, 4, 6
V2714	Recessed Pendent	Quick	C	1,2,3,4,8	UL, ULC	1, 2, 4, 6
V2716	Pendent	Quick	C	1,2,3,4,8	UL, ULC	1, 2, 4, 6
V2716	Recessed Pendent	Quick	C	1,2,3,4,8	UL, ULC	1, 2, 4, 6

Residential



V28 Frame-K4.2 Flush Pendent
Request 40.48

Model No.	Deflector Type	Response Category	Temp. Ratings	Available Finishes	Approvals Listing	Notes
V2802	Flush Pendent	Quick	N	2,4	UL, ULC	-

Residential-Horizontal Sidewall



V27 Frame-K3.5 Sidewall
Request 40.46

Model No.	Deflector Type	Response Category	Temp. Ratings	Available Finishes	Approvals Listing	Notes
V2718	Horizontal Sidewall	Quick	C	1,2,3,4,8	UL, ULC	1, 2, 4, 7
V2718	Recessed Hor. Sidewall	Quick	C	1,2,3,4,8	UL, ULC	1, 2, 4, 7

Decorative-Concealed Pendent-Ordinary Hazard



V38 Frame-K5.6
Request 40.50

Model No.	Deflector Type	Response Category	Temp. Ratings	Available Finishes	Approvals Listing	Notes
V3801	Concealed Pendent and Cover Plate	Standard	C, F	2,3,4,8	UL, ULC	1, 2, 4
V3802	Concealed Pendent and Cover Plate	Quick	C, F	2,3,4,8	UL, ULC, FM	1, 2, 4, 5
-	Replacement Cover Plate only	Standard/Quick	A,D* (see note 8)	2,3,4,8	UL, ULC, FM	1, 2, 4, 8

SPRINKLER FINISHES

* Contact Victaulic for wax, lead, and wax-over-lead coatings.

Abbrev.	Victaulic Part Ident.	Finish	Abbrev.	Victaulic Part Ident.	Finish
BR	1	Plain	CSTM	8	Custom Painted
CP	2	Chrome	WX	5	*Wax Coated
BB	3	Bright Brass	LD	6	*Lead Coated
WH	4	White Painted	WL	7	*Wax/Lead Coated

AUTOMATIC SPRINKLER NOTES

- *Contact Victaulic for wax, lead, and wax-over-lead coatings.
- 1-MEA Approved for V27 and V34-62-99-E.
- 2-CSFM Listing for V27 and V34-7690-0531: 112.
- 3-FM Approved for light hazard only.
- 4-Not all temperature ratings or finishes are approved or listed. Refer to current product submittals for specific information. V27 and V34 units are MEA (#62-99-E) and CSFM (#7690-0531:112) Listed.
- 5-Recognized by FM as standard response only.
- 6-Pendent-K3.0 for room sizes up to 16' x 16' (4.9 x 4.9 m); K3.5 sizes up to 18' x 18' (5.5 x 5.5 m) and 20' x 20' (6.1 x 6.1 m).
- 7-Horizontal Sidewall-K3.5 for room sizes up to 16' x 16' (4.9 x 4.9 m).
- 8-Cover "A" is rated for 135°F (57°C) for use with standard or quick response sprinklers rated 135°F and 155°F (57°C and 68°C). Cover "D" is rated for 165°F (74°C) for use with standard or quick response sprinklers rated 175°F and 200°F (79°C and 93°C). A proper temperature rated cover must be used with the correct sprinkler rating.

TEMPERATURE RATINGS

*Not all temperatures are available with all styles of sprinklers. Consult individual submittal sheets for specific information.

Victaulic Part Identification	Temperature-°F/°C		Glass Bulb Color
	Nominal Temperature Rating	Maximum Ambient Temp. Allowed	
A	135 / 57	100/38	Orange
C	155 / 68	100/38	Red
E	175 / 79	150/65	Yellow
F	200 / 93	150/65	Green
J	286 / 141	225/107	Blue
K	360 / 182	300/149	Mauve
M	Open	-	No Bulb
N	162 / 72	100/38	Fusible Metal



CPVC PRODUCTS

CPVC PRODUCTS

Coupling



Elbows



Sprinkler Head Elbow



Tee



Sprinkler Head Tee



Reducer Coupling



Grooved Coupling Adapter



Crosses



Flanges



Listing Approval Agency	Pipe Size Range Inches	Rated Work. Press. psi	Notes
UL/FM	3/4-2	175	1,2
UL/FM	3/4-2	175	1,2
UL/FM	3/4-2	175	1,2
UL/FM	3/4-2	175	1,2
UL/FM	3/4-2	175	1,2
UL/FM	3/4-2	175	1,2
UL/FM	3/4-2	175	1,2
UL/FM	3/4-2	175	1,2
UL/FM	3/4-2	175	1,2
UL/FM	3/4-2	175	1,2

CPVC PRODUCTS

Unions



Reducer Bushing



Cap



Female Threaded Adapters



Spigot Female Adapters



Female Sprinkler Head Adapters



Spigot Sprinkler Head Adapters



Adjustable Sprinkler Head Adapters



Listing Approval Agency	Pipe Size Range Inches	Rated Work. Press. psi	Notes
UL/FM	3/4-2	175	1,2
UL/FM	1 x 3/4-2 x 1 1/2	175	1,2
UL/FM	3/4-2	175	1,2
UL/FM	3/4-2	175	1,2
UL/FM	3/4-1	175	1,2
UL/FM	3/4 X 1/2-1 X 3/4	175	1,2
UL/FM	3/4 X 1/2-1 X 1/2	175	1,2
UL/FM	3/4 X 1/2-1 X 1/2	175	1,2

CPVC PRODUCTS NOTES

- 1-Please refer to the latest Installation and Maintenance (1-800) manual for cross usage with other manufacturer's CPVC products.
- 2-Pressure rating is based on a maximum temperature of +150°F (+66°F).